

Reordering

St Nic's PCC have recently completed a refurbishment of the church to bring it up-to-date for today's congregations. Over the years balconies have come and gone, and this latest building project has reinstated a cantilevered balcony to take up the increasing numbers of a growing congregation and a baptistry. Energy efficient underfloor heating,

upgraded kitchens and WCs and a lift for access have all breathed a new lease of life into this continually-evolving place of worship.

Before the reordering the church's most recent incarnation was as the picture on the right.

During the reordering the burial places such as these

pictured below used in earlier times were uncovered. The lead-lined coffins and remains were reinterred. The picture on the right below shows a burial chamber beneath the chancel floor.



Welcome to St Nicholas' Church, Nottingham

This church was built in the Middle Ages to serve the Norman borough along with St Peter's. It was the poorest of the churches, relying only on tithes and offerings. Little of the medieval church survives as it was largely destroyed during a Civil War skirmish in 1643. The Royalists established themselves in the tower of the old church, and bombarded the garrison of the Castle. After the war, the governor of the castle, Colonel Hutchinson, ordered the old church to be completely destroyed. It was rebuilt in 1768 during straitened times in an austere style. It is noted in the records of

the Borough that on 8th of September 1671 a petition was received from the church for 'Tenn Tymber Trees' to be used 'towards the rebuilding of the said Church'.

Before Maid Marian Way was built in 1966, St Nicholas Church stood in its own grounds with a Rectory next to it, and encircled by railings, the last of which were removed in 1970.

The small churchyard contains a few interesting gravestones, for example that of John Attenburrow, the first man in Nottingham to inoculate against smallpox. There is also a



Holbrook plaque to Gilbert Wakefield, theologian and scholar. The churchyard ceased being used for burials in 1881.

The chancel was largely stripped of fittings in 1979 and the nave in 1991. Hatchments and wall monuments remain, and these are a reminder of St Nicholas' history as a society church.

Today the building hosts a lively, evangelical congregation. Visitors are always welcome and there are many ways to get involved. See

www.stnicsonline.org



The University of
Nottingham

Are you fascinated by church history? Could you help us bring church heritage to life? The Southwell & Nottingham Diocese Church History Project would like to hear from you.

For more information please see www.nottsoopenchurches.org.uk

Many thanks to Emma Cole for the material used in this leaflet and to Geoff Buxton for photographs





1 The tower

Originally St Nicholas' church had a spire but this was demolished by a shot from Nottingham castle during the Civil War. The crenellated edging is a reminder of its military history. Typical 17th century bricks are noticeable in the tower where, although there is much random building, a good deal of English Bond is observable.

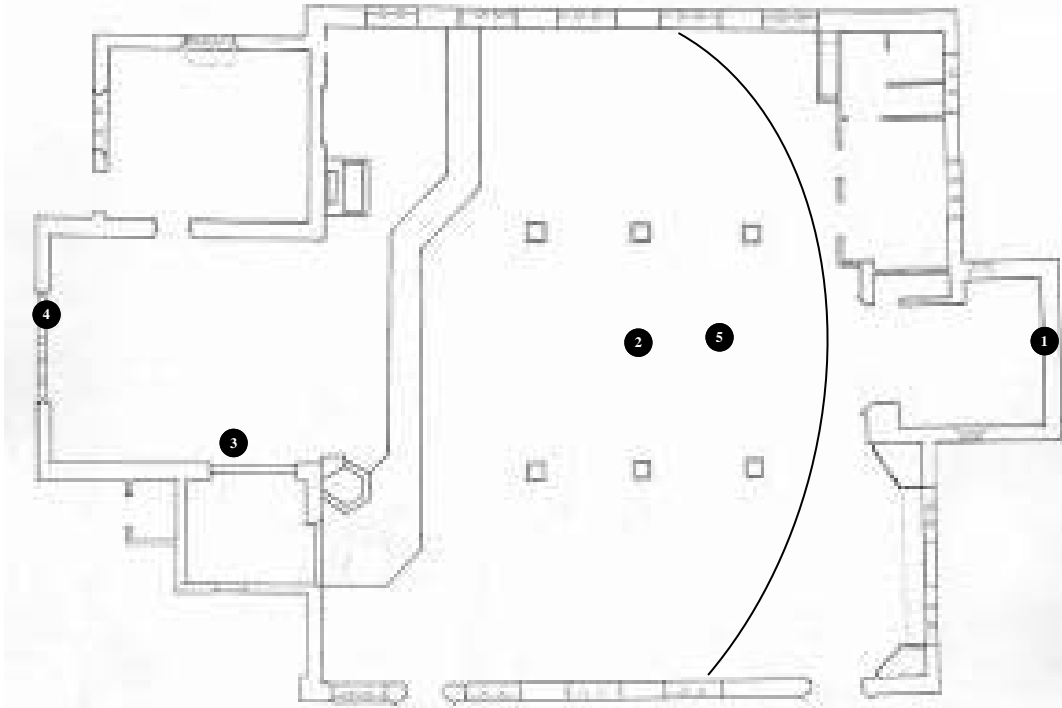


3 The organ

The organ was erected in 1811 and the pipes are still visible, though purely ornamental. It was recently replaced with an electric organ.

2 The nave and aisles

The church has a spacious nave and two side aisles with heavy round-arched windows, the southernmost aisle was much enlarged by subscription in 1756; and a similar extension of the north aisle took place in 1783. There is an arched opening to the chancel, and an 18th century moulded ceiling. The nave has four-bay Tuscan arcades with stone columns, a round arch into the tower and a gabled timber roof from 1848. The pews were removed in 1972.



4 The windows and walls

On each side of the communion table are elegant paintings representing the Good Samaritan and the Prodigal Son, and the walls are decorated with many monumental tablets, and four hatchments belonging to the families of Newdigate, Smith, Bromley and Cooper. The east stained glass window was installed circa 1913.



5 The roof

The nave has a scissor braced roof and the aisles are cross beam with arch braces.

