



Researching  
painted  
mural  
decoration



Blyth, east end in 1985 before uncovering of mural paintings



Blyth, C15th 'Last Judgement' after uncovering and conservation



The 'Fishermen's Chapel', Jersey: 'Last Judgement'



Blyth – nave ceiling  
vault showing  
unrestored C13th  
painting



Blyth. Notts. C12th outline painting



Halam – recently discovered  
yellow ochre painted decoration.  
Possibly C12th.



Lakenheath, Suffolk: multiperiod wall paintings





Lakenheath: late C15th painting  
to south of chancel arch



Lakenheath: mid C14th painting  
on spandril and underside of  
arcades





Lakenheath: reconstruction of mid C14th painting



Risby, Suffolk: *Nole me tangere*  
painting in nave; early C13th.



Corby Glen, Lincs. C15th Virgin and Child, and King Herod



Pickworth, Lincs. Late C14th 'weighing of the souls'



Hockwold, St Peter, Norfolk: foliate ornament and ashlar outlines



Chippenham, Cambridgeshire:  
late C15th painting of St  
Christopher on north wall





Chippenham, evidence of painting on arcades and in a niche



Normanton-on-Trent: traces of white limewash 'ground' (or later overpaint) and red ochre painting on nave arcade



Hockerton: decorative paint  
traces visible under flaking  
overpainting



Winkburn: two periods of decorative paint schemes uncovered during redecoration



North Scarle, Lincolnshire: medieval painted  
consecration cross in chancel



Langford: traces of C19th 'colourwash' on  
chancel walls



Thurgarton, east window:  
traces of paint on canopy



Sibthorpe: C18th ceiling cuts the head of the chancel arch





Sibthorpe: top of chancel arch and surviving original plaster with paint traces



Newark, St Mary: 'Dance of Death'; mid C16th.



Llangar, Clywd. C17th  
wall paintings,



Upton: 'Angel' painting in north chapel; probably  
c.1800

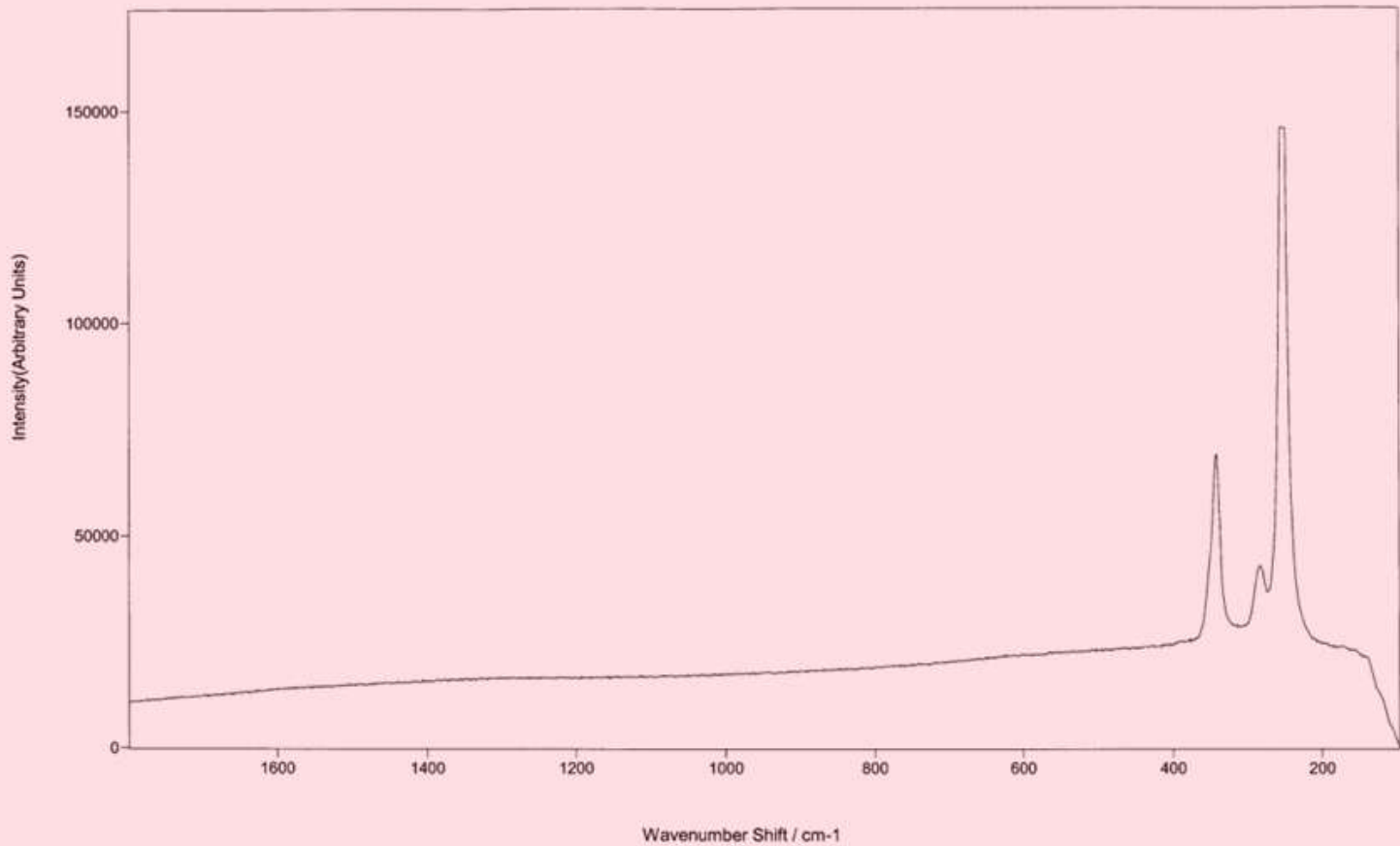
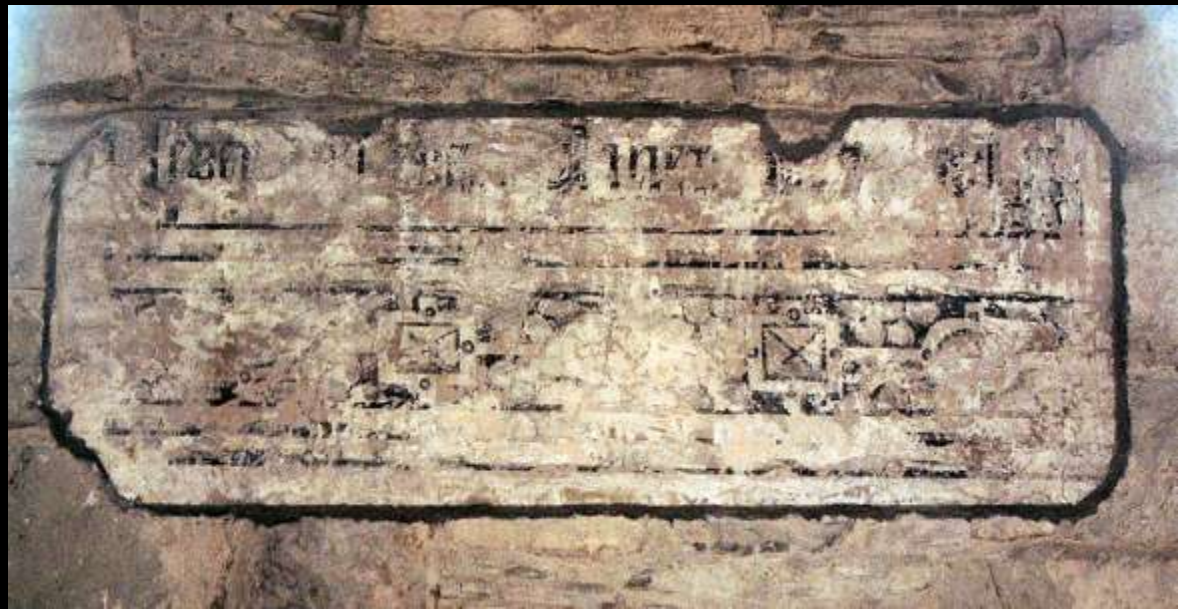


Fig. 10 Raman spectrum of red particle of cinnabar in specimen D, 758 nm excitation

Upton: 'Angel' painting FTIRS analysis of red pigment

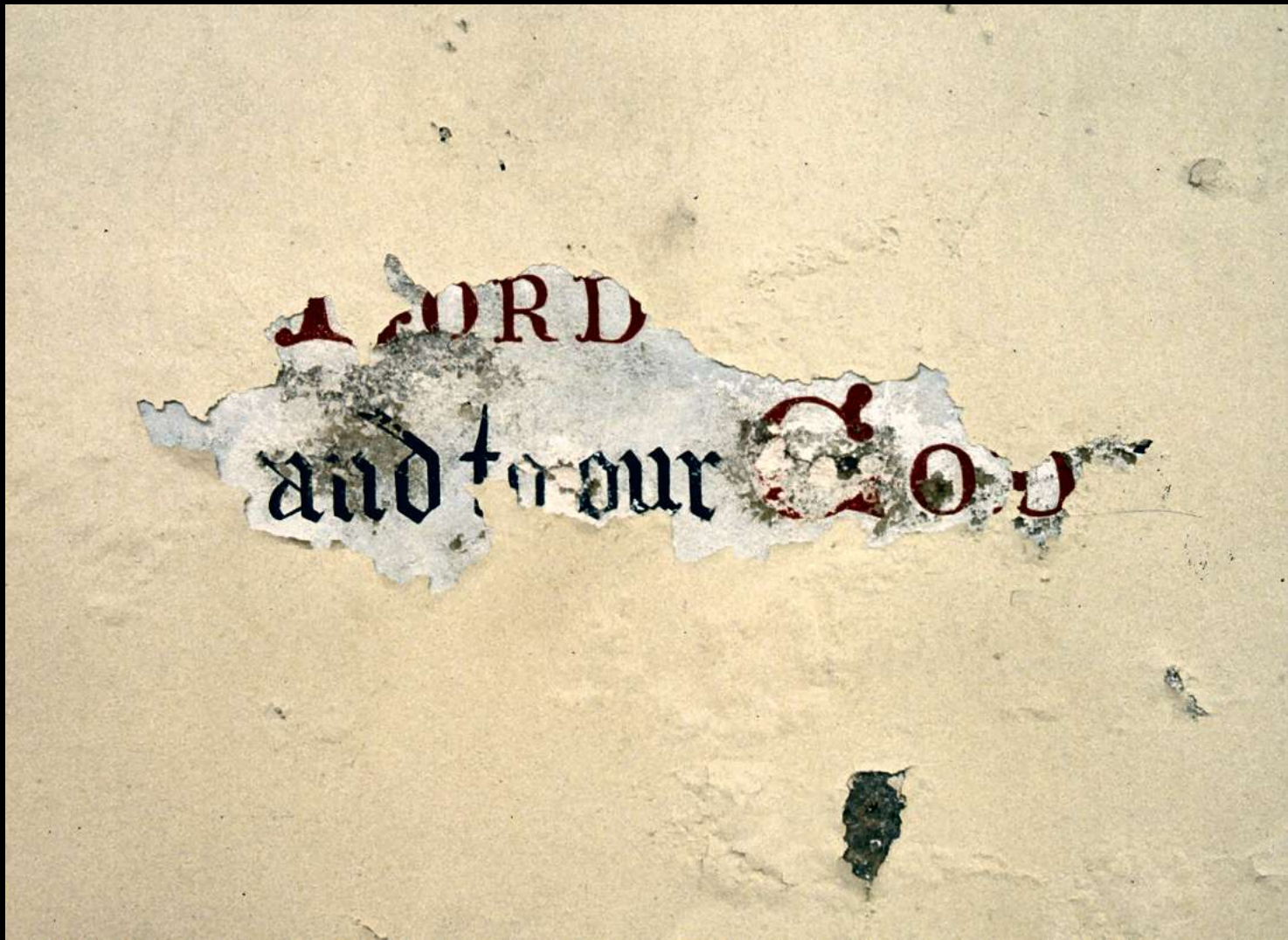


Willoughby-on-the-Wolds:  
post-Reformation black-  
letter texts and arms





Caunton: C19th texts and stencil decoration on chancel arch. Uncovered during repair work.



Laxton: 1860s texts overpainted and now becoming visible again





East Stoke: C19th stencil  
decoration on the nave roof.

Now lost due to overpainting

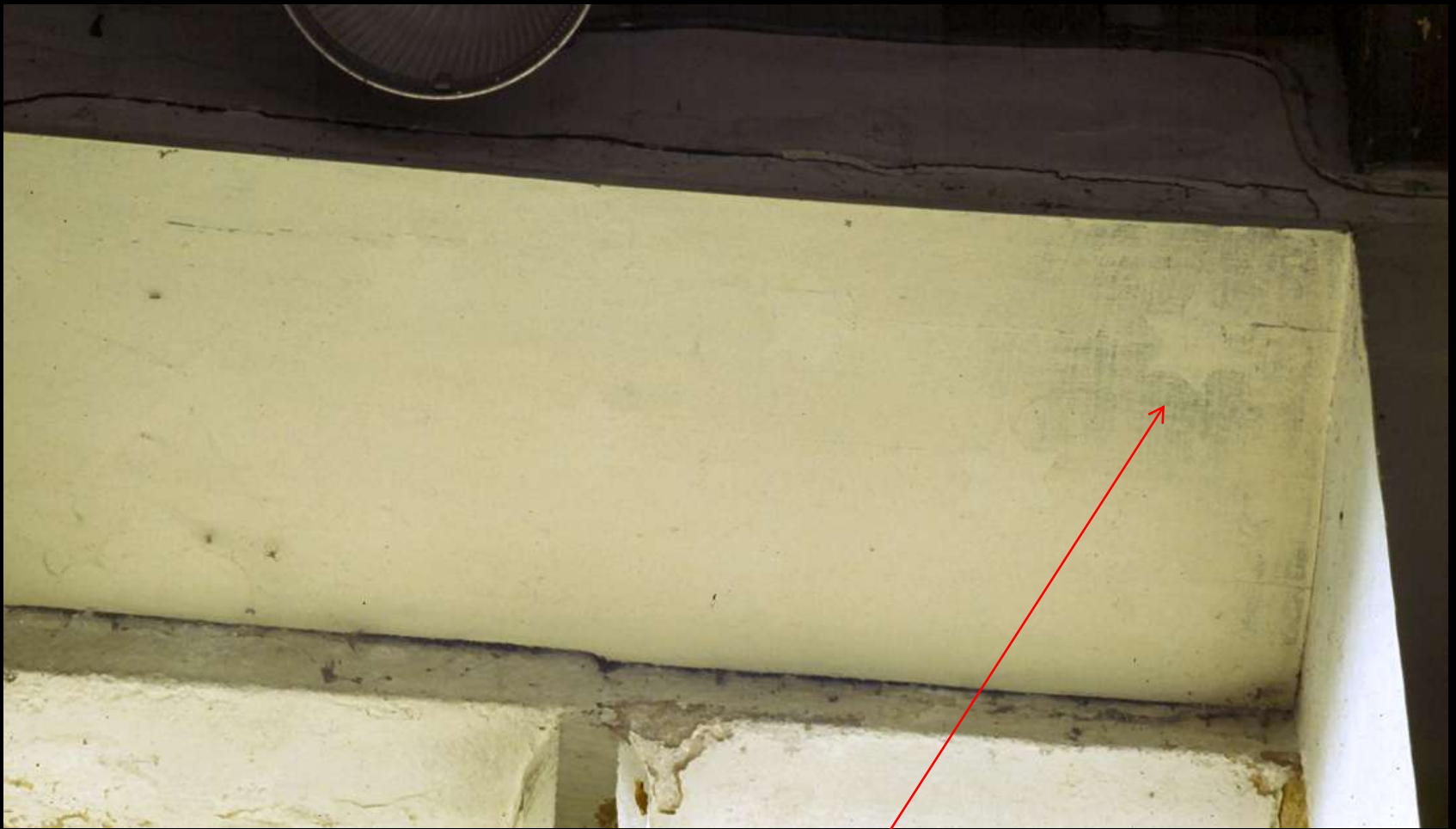




South Scarle: late medieval carved roof post with fragmentary traces of paint



Coddington: 1860s painted chancel ceiling



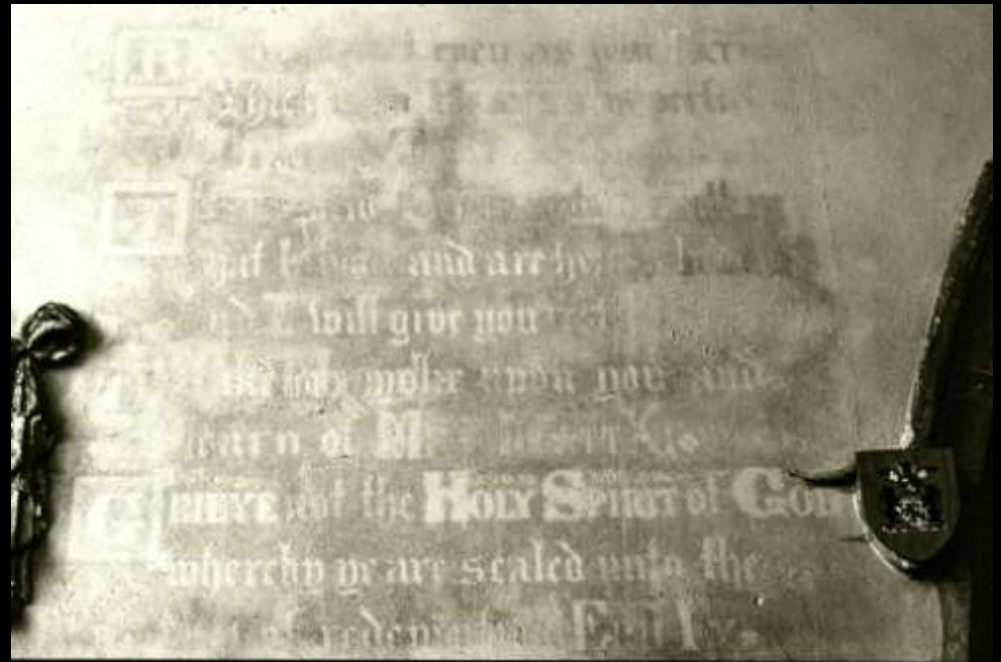
East Stoke: stencil decoration on clerestory window soffits; almost invisible



East Stoke: the same window soffit using ultraviolet reflectography; now revealing full hidden painted pattern



Upton: 'angel' mural  
enhanced using UV  
fluorescence



Laxton: overpainted texts enhanced using CEI imagery



Averham: view  
west over tower  
arch



# Averham: CEI imagery revealing hidden wall paintings

